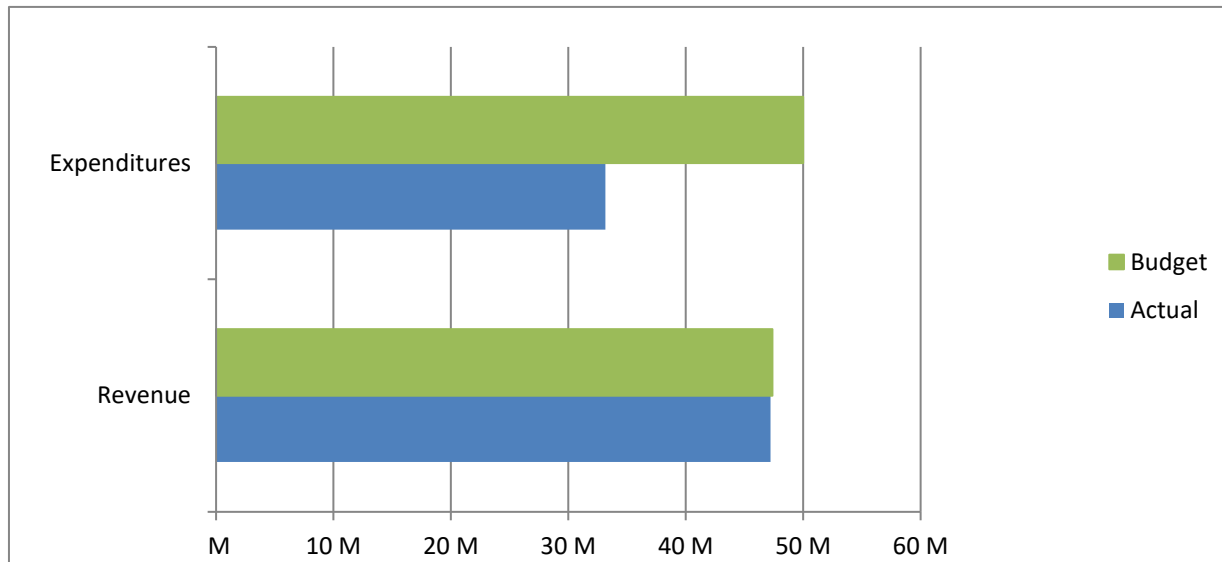


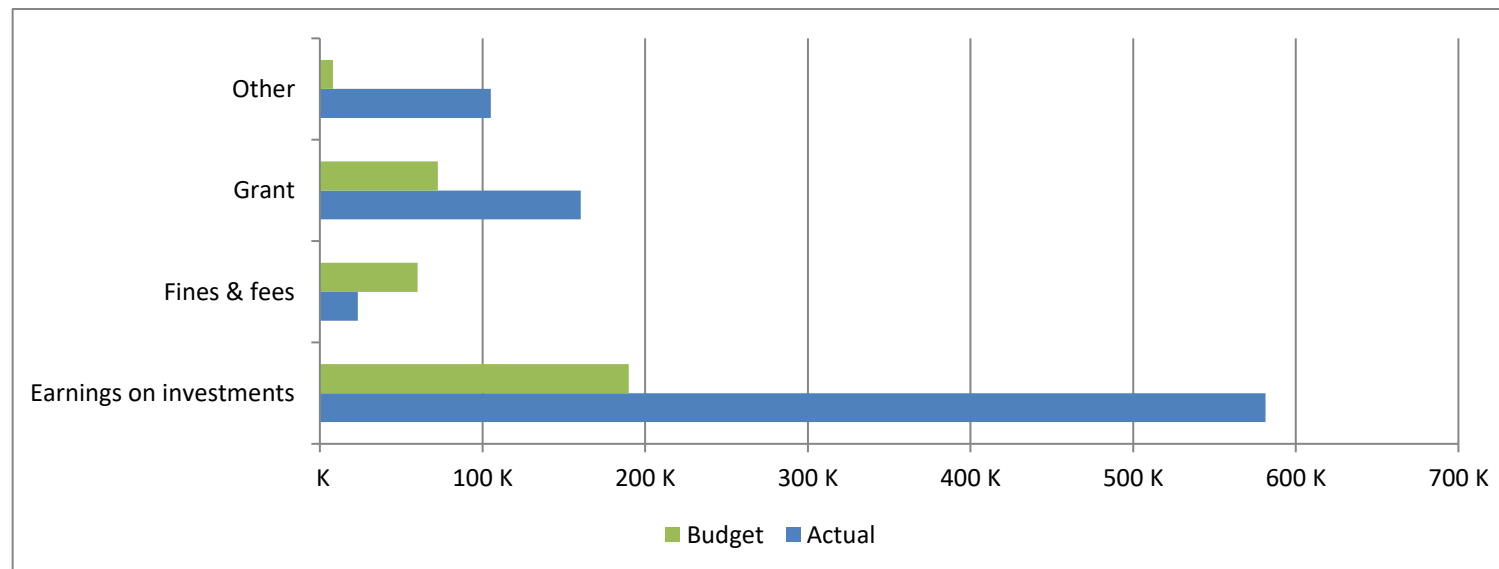
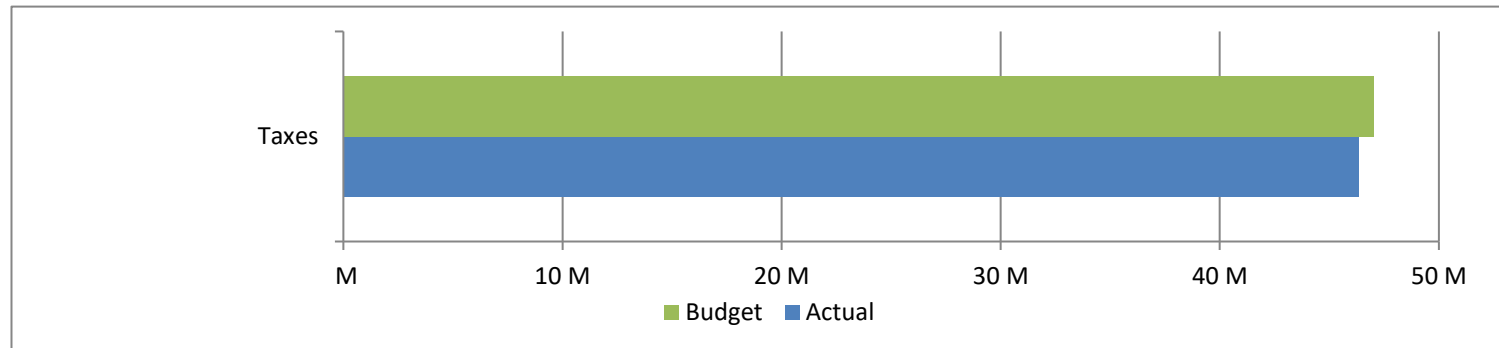
High Plains Library District
Net Income (Loss) Actual vs Budget
For the Period Ended November 30, 2020
91.7% of budget year elapsed

Income (Loss)	Year To Date Actual	Annual Budget	Variance	% of Actual to Annual Budget
Revenue	47,222,564	47,374,441	(151,877)	99.68%
Expenditures	33,166,267	49,988,669	16,822,402	66.35%
Total	14,056,297	(2,614,228)	16,670,525	

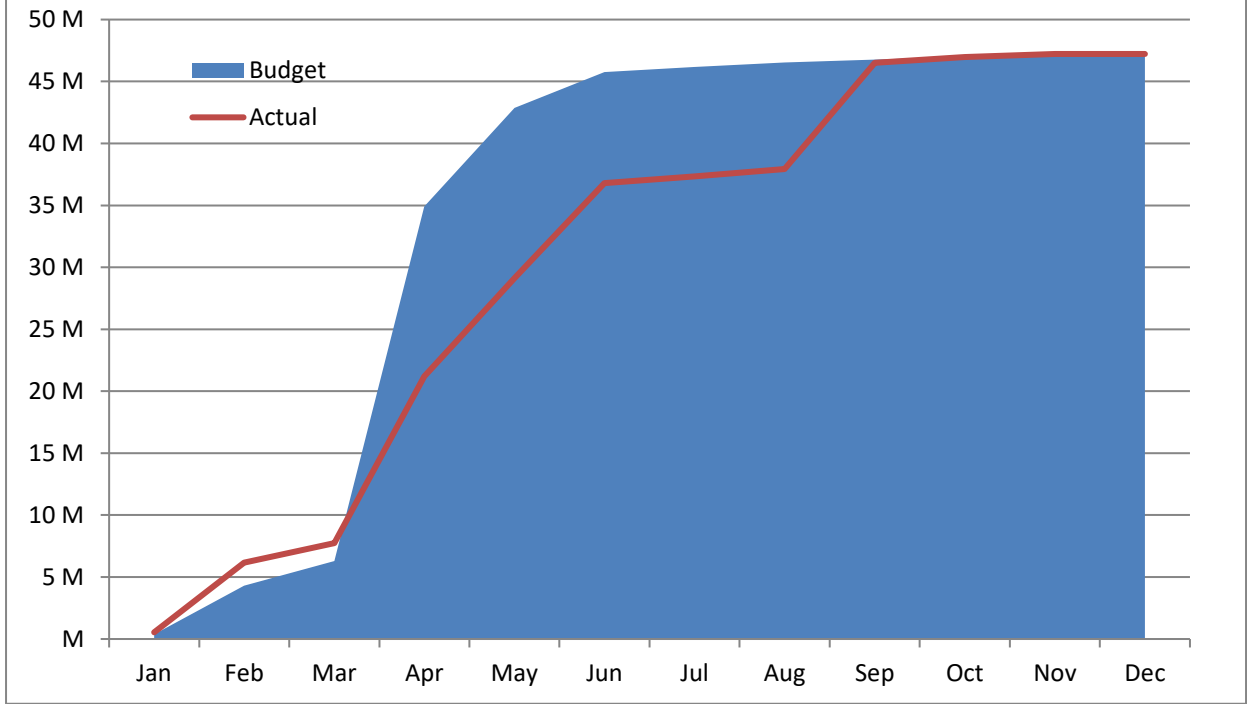


High Plains Library District
Net Income (Loss) Actual vs Budget
For the Period Ended November 30, 2020
91.7% of budget year elapsed

Revenues	Year To Date Actual	Annual Budget	Variance	% of Actual to Annual Budget
Taxes	46,352,175	47,043,922	(691,747)	98.53%
Earnings on investments	581,384	190,000	391,384	305.99%
Fines & fees	23,377	60,000	(36,623)	38.96%
Grant	160,437	72,519	87,918	221.23%
Other	105,191	8,000	97,191	1314.89%
Total	47,222,564	47,374,441	(151,877)	



Accumulated Revenues



High Plains Library District
Net Income (Loss) Actual vs Budget
For the Period Ended November 30, 2020
91.7% of budget year elapsed

Expenditures	Year To Date Actual	Annual Budget	Variance	% of Actual to Annual Budget
S & W / Benefits	9,516,408	12,888,443	3,372,035	73.84%
Operations	4,685,412	6,997,995	2,312,583	66.95%
Capital outlay	9,270,549	20,005,020	10,734,471	46.34%
Debt service	-	-	-	-
Member tax distribution	9,693,898	10,097,211	403,313	96.01%
Total	33,166,267	49,988,669	16,822,402	66.35%

