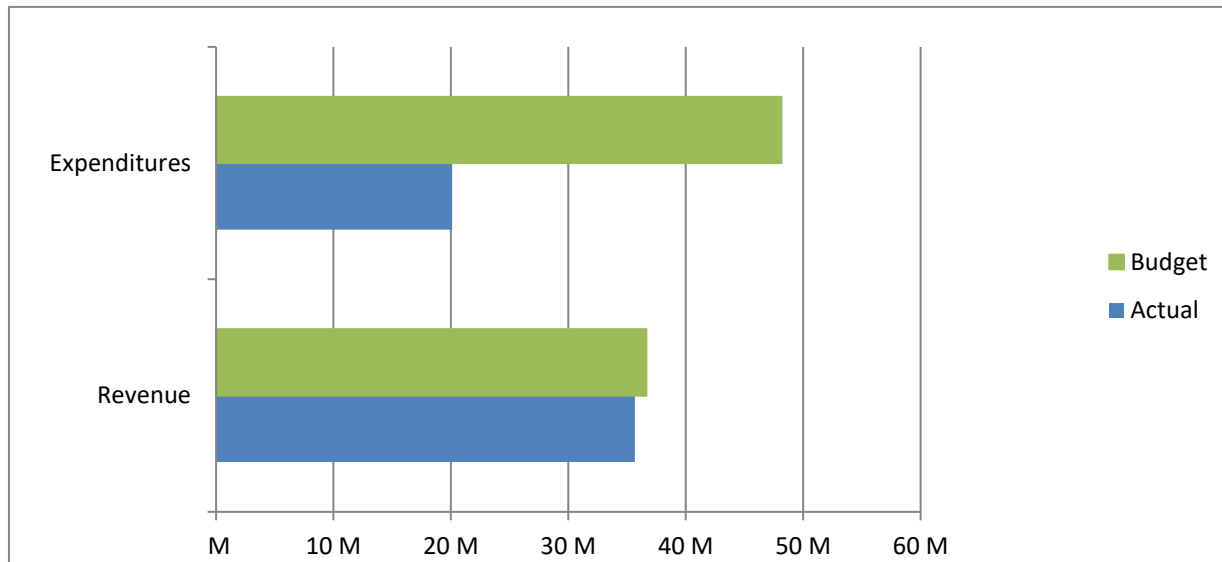


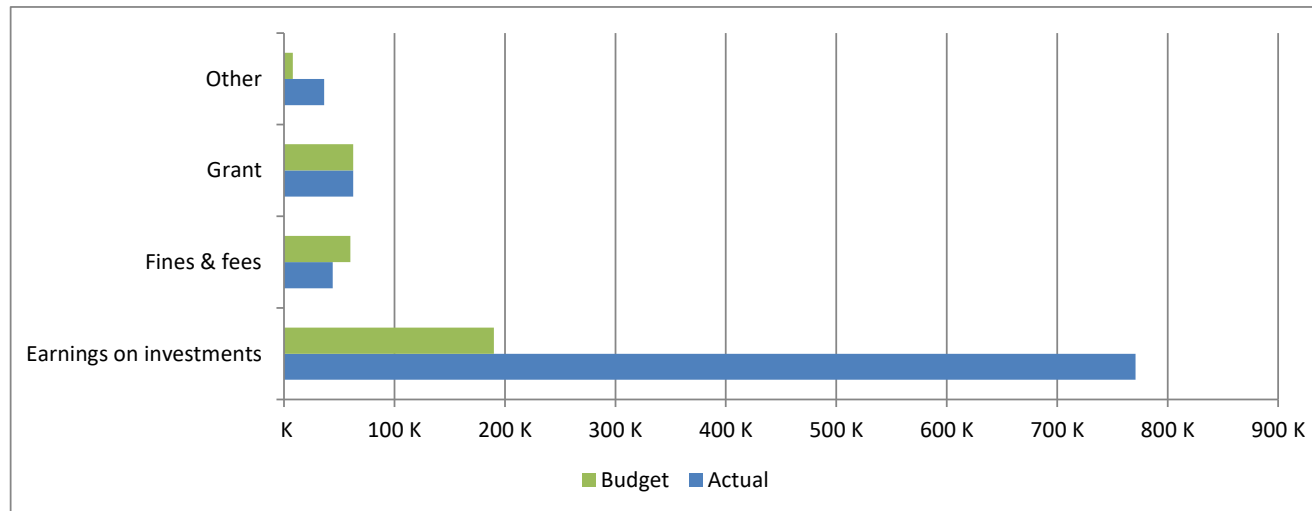
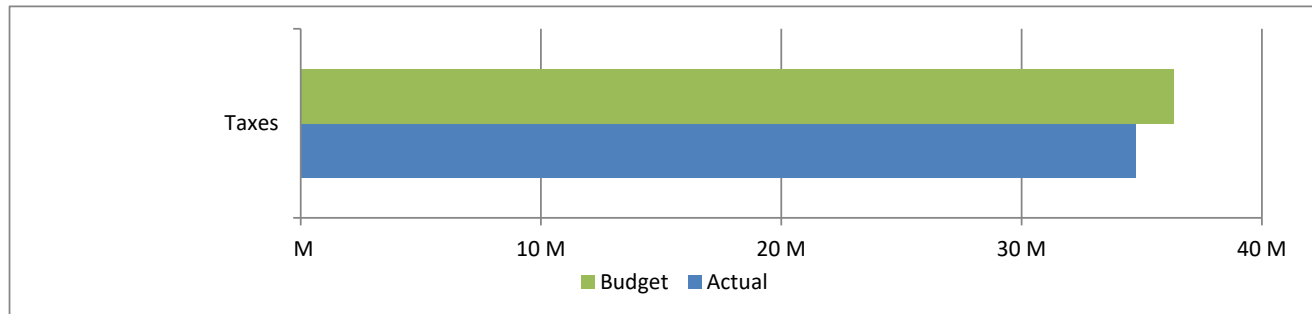
**High Plains Library District
 Net Income (Loss) Actual vs Budget
 For the Period Ended August 31, 2019
 66.7% of budget year elapsed**

Income (Loss)	Year To Date Actual	Annual Budget	Variance	% of Actual to Annual Budget
Revenue	35,656,194	36,650,181	(993,987)	97.29%
Expenditures	20,104,764	48,128,918	28,024,154	41.77%
Total	15,551,430	(11,478,737)	27,030,167	

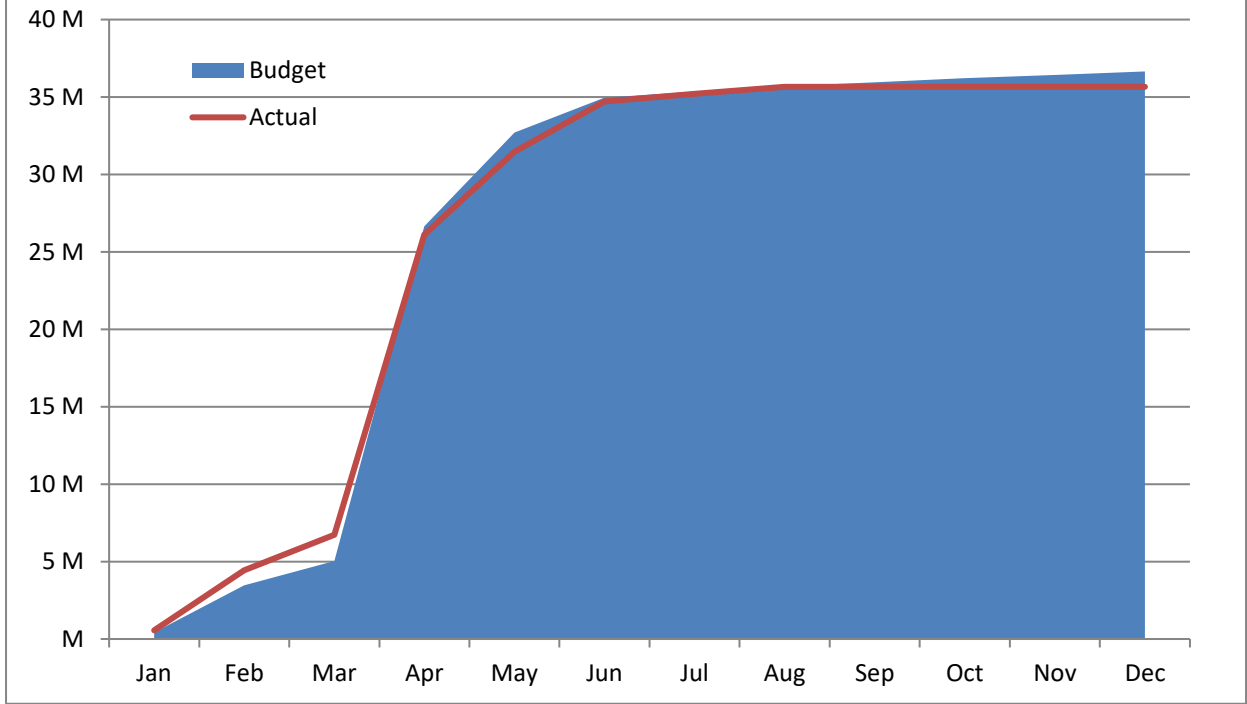


High Plains Library District
Net Income (Loss) Actual vs Budget
For the Period Ended August 31, 2019
66.7% of budget year elapsed

Revenues	Year To Date Actual	Annual Budget	Variance	% of Actual to Annual Budget
Taxes	34,742,112	36,329,590	(1,587,478)	95.63%
Earnings on investments	771,033	190,000	581,033	405.81%
Fines & fees	44,108	60,000	(15,892)	73.51%
Grant	62,591	62,591	-	100.00%
Other	36,350	8,000	28,350	454.38%
Total	35,656,194	36,650,181	(993,987)	



Accumulated Revenues



High Plains Library District
Net Income (Loss) Actual vs Budget
For the Period Ended August 31, 2019
66.7% of budget year elapsed

Expenditures	Year To Date Actual	Annual Budget	Variance	% of Actual to Annual Budget
S & W / Benefits	6,714,720	11,829,189	5,114,469	56.76%
Operations	3,795,574	6,224,004	2,428,430	60.98%
Capital outlay	1,907,328	22,269,100	20,361,772	8.56%
Debt service	16,144	165,000	148,856	9.78%
Member tax distribution	7,670,998	7,641,625	(29,373)	100.38%
Total	20,104,764	48,128,918	28,024,154	41.77%

