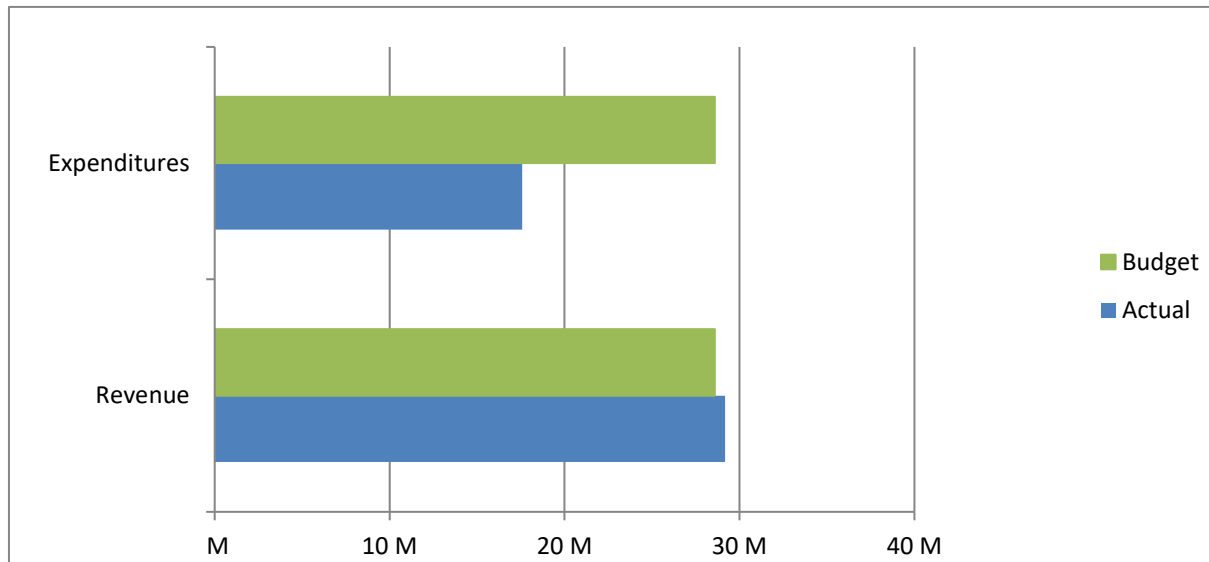


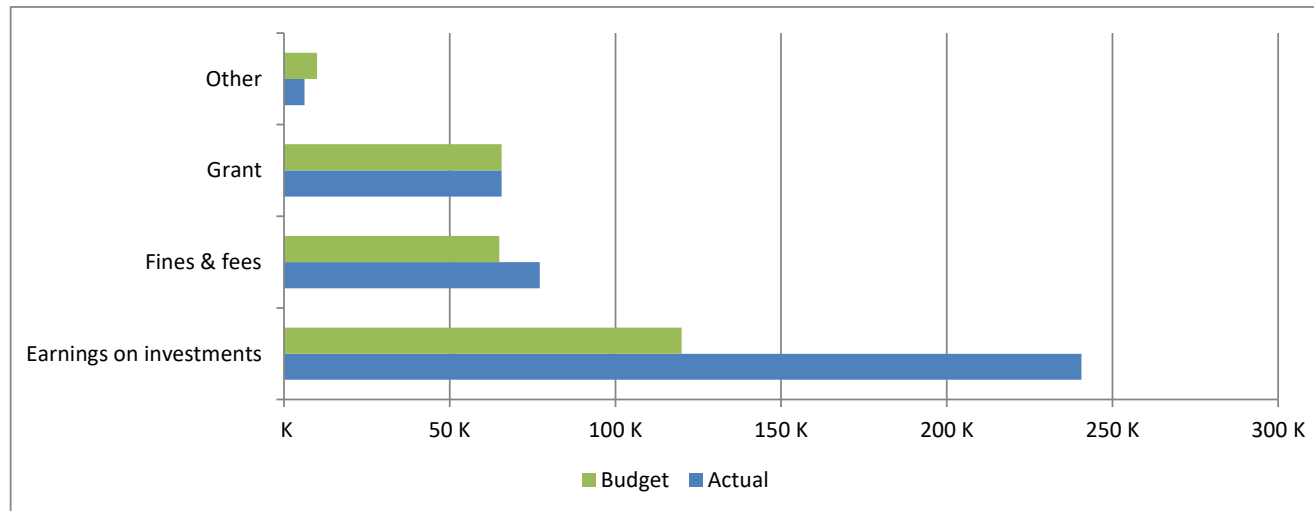
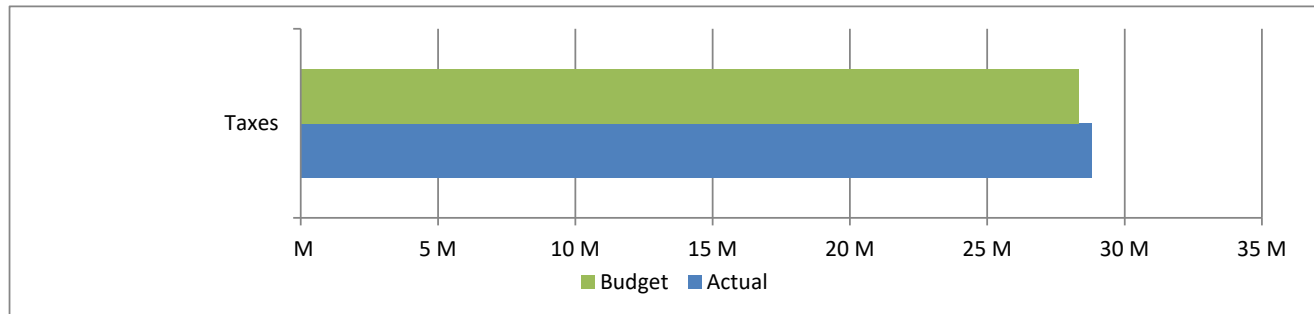
High Plains Library District
Net Income (Loss) Actual vs Budget
For the Period Ended October 31, 2017
83.3% of budget year elapsed

Income (Loss)	Year To Date Actual	Annual Budget	Variance	% of Actual to Annual Budget
Revenue	29,179,777	28,591,000	588,777	102.06%
Expenditures	17,582,591	28,591,000	11,008,409	61.50%
Total	11,597,186	-	11,597,186	

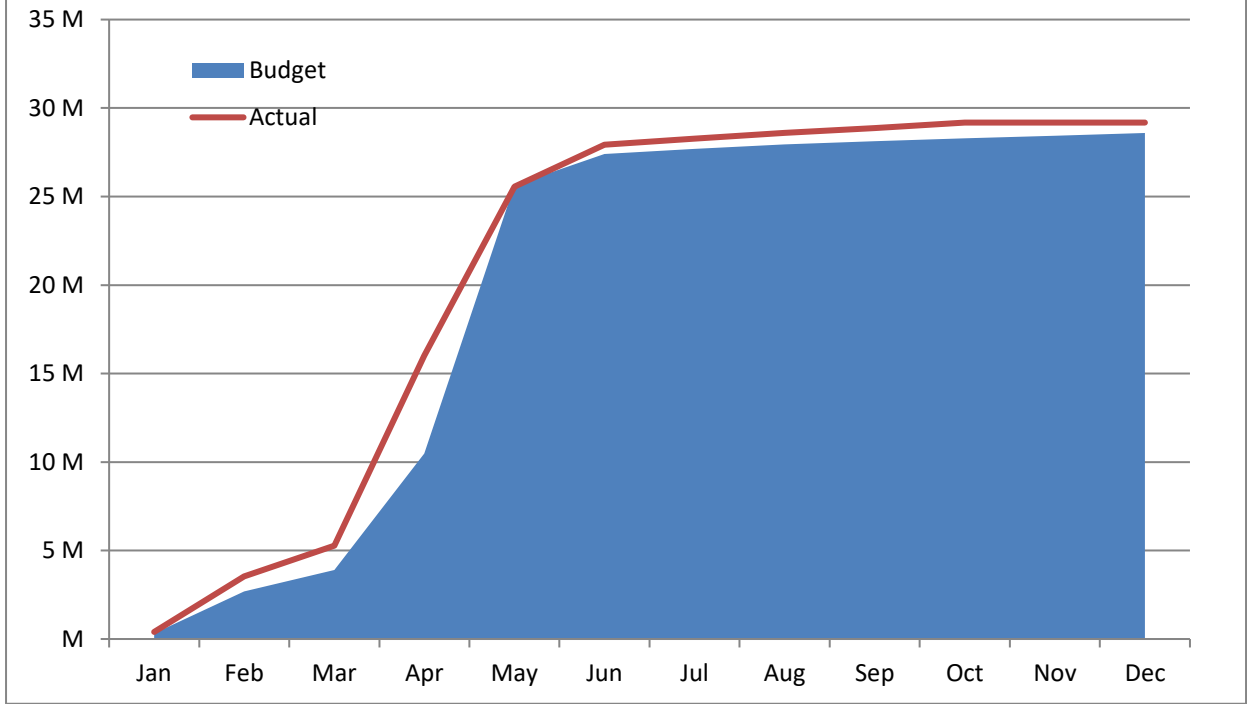


High Plains Library District
Revenues Actual vs Budget
For the Period Ended October 31, 2017
83.3% of budget year elapsed

Revenues	Year To Date Actual	Annual Budget	Variance	% of Actual to Annual Budget
Taxes	28,790,180	28,330,379	459,801	101.62%
Earnings on investments	240,640	120,000	120,640	200.53%
Fines & fees	77,173	65,000	12,173	118.73%
Grant	65,621	65,621	-	100.00%
Other	6,163	10,000	(3,837)	61.63%
Total	29,179,777	28,591,000	588,777	



Accumulated Revenues



High Plains Library District
Expenditures Actual vs Budget
For the Period Ended October 31, 2017
83.3% of budget year elapsed

Expenditures	Year To Date Actual	Annual Budget	Variance	% of Actual to Annual Budget
S & W / Benefits	7,479,610	9,902,332	2,422,722	75.53%
Operations	3,762,368	5,361,536	1,599,168	70.17%
Capital outlay				
Lincoln Park	-	5,000,000	5,000,000	0.00%
Kersey Library	-	400,000	400,000	0.00%
Other	66,629	582,366	515,737	11.44%
Debt service	46,743	1,117,525	1,070,782	4.18%
Member tax distribution	6,227,241	6,227,241	-	100.00%
Total	17,582,591	28,591,000	11,008,409	61.50%

