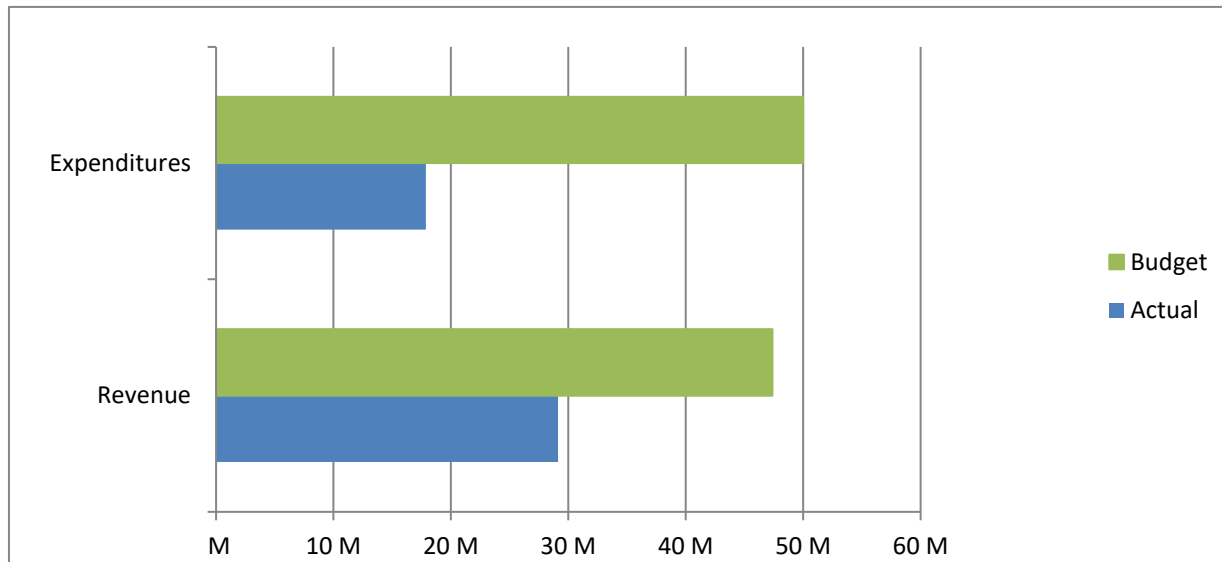


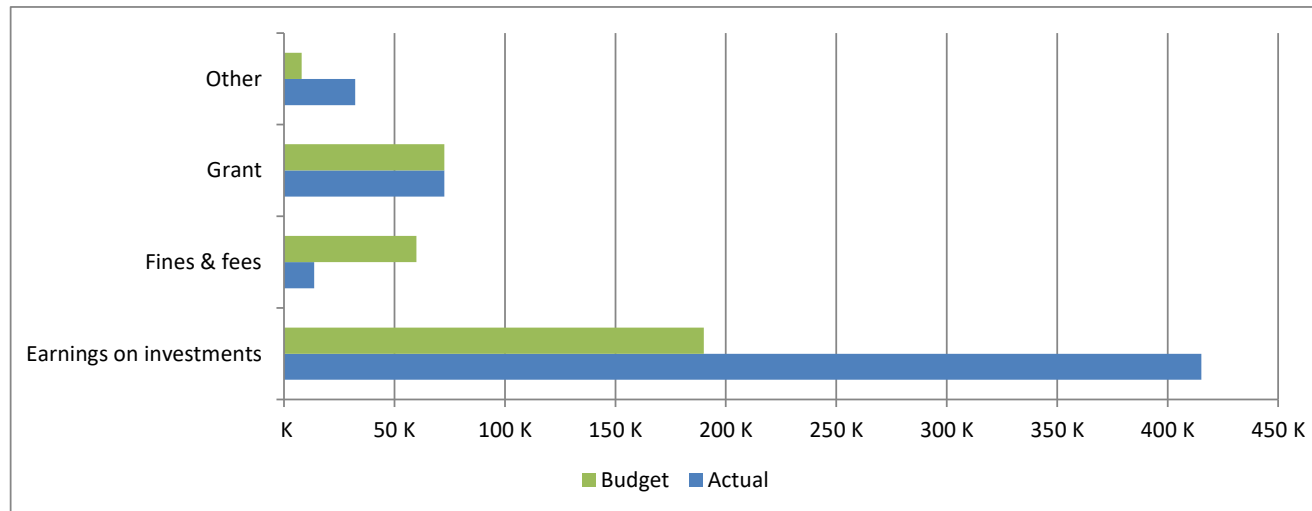
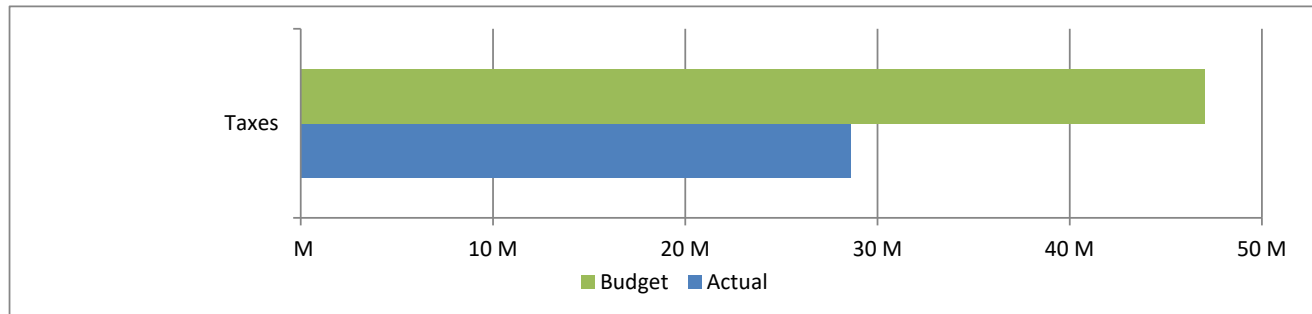
**High Plains Library District**  
**Net Income (Loss) Actual vs Budget**  
**For the Period Ended May 31, 2020**  
**41.7% of budget year elapsed**

Income (Loss)	Year To Date Actual	Annual Budget	Variance	% of Actual to Annual Budget
Revenue	29,132,522	47,374,441	(18,241,919)	61.49%
Expenditures	17,870,723	49,988,669	32,117,946	35.75%
Total	11,261,799	(2,614,228)	13,876,027	

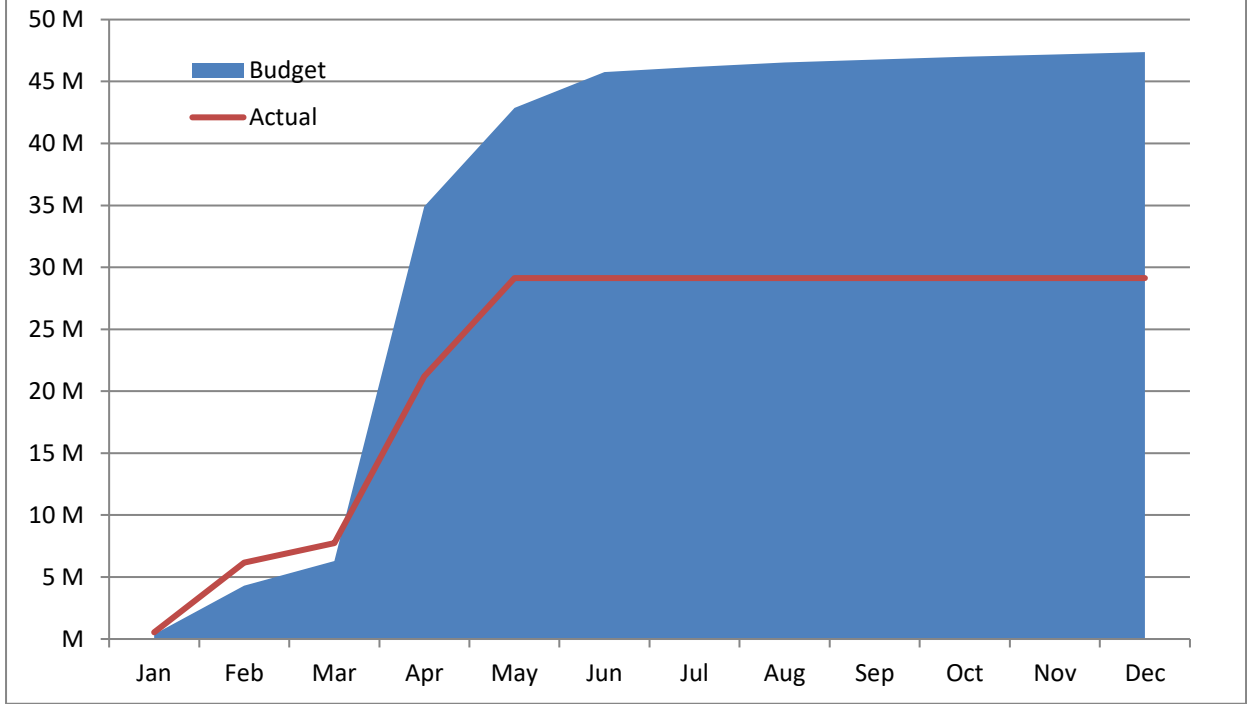


**High Plains Library District**  
**Net Income (Loss) Actual vs Budget**  
**For the Period Ended May 31, 2020**  
**41.7% of budget year elapsed**

Revenues	Year To Date Actual	Annual Budget	Variance	% of Actual to Annual Budget
Taxes	28,598,757	47,043,922	(18,445,165)	60.79%
Earnings on investments	415,304	190,000	225,304	218.58%
Fines & fees	13,672	60,000	(46,328)	22.79%
Grant	72,519	72,519	-	100.00%
Other	32,270	8,000	24,270	403.38%
<b>Total</b>	<b>29,132,522</b>	<b>47,374,441</b>	<b>(18,241,919)</b>	



## Accumulated Revenues



**High Plains Library District**  
**Net Income (Loss) Actual vs Budget**  
**For the Period Ended May 31, 2020**  
**41.7% of budget year elapsed**

Expenditures	Year To Date Actual	Annual Budget	Variance	% of Actual to Annual Budget
S & W / Benefits	4,237,701	12,888,443	8,650,742	32.88%
Operations	2,481,571	6,997,995	4,516,424	35.46%
Capital outlay	5,146,649	20,005,020	14,858,371	25.73%
Debt service	-	-	-	
Member tax distribution	6,004,802	10,097,211	4,092,409	59.47%
<b>Total</b>	<b>17,870,723</b>	<b>49,988,669</b>	<b>32,117,946</b>	<b>35.75%</b>

