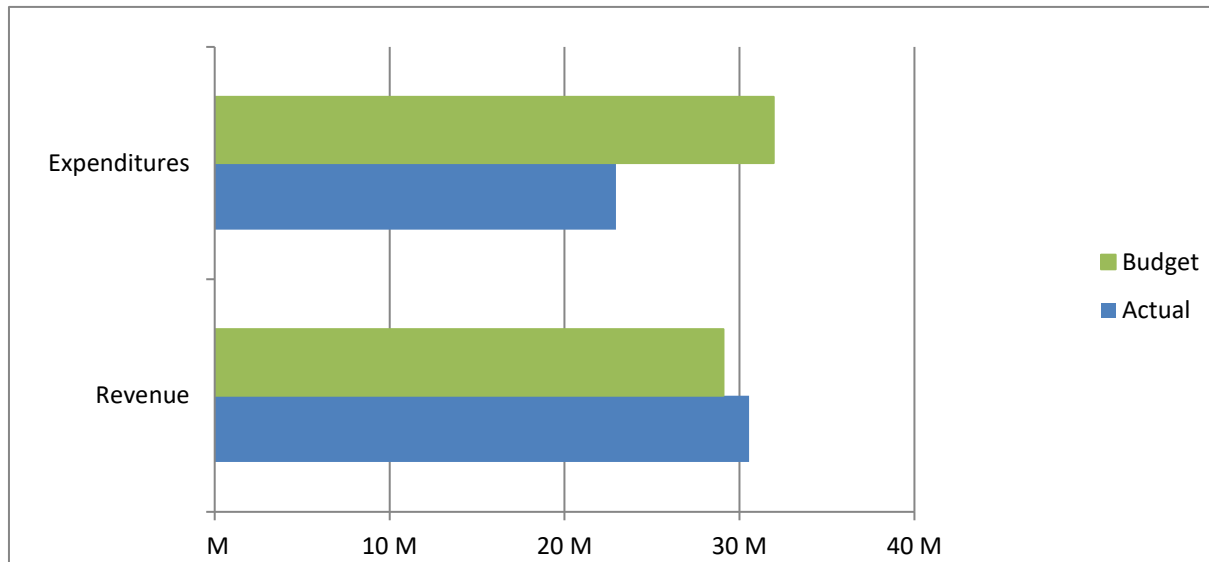


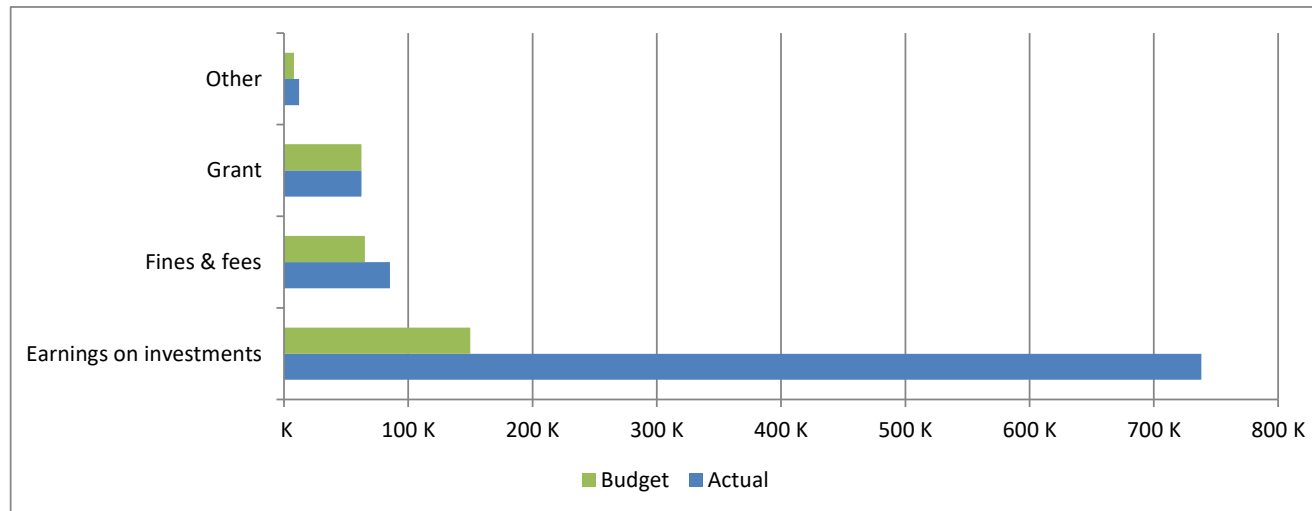
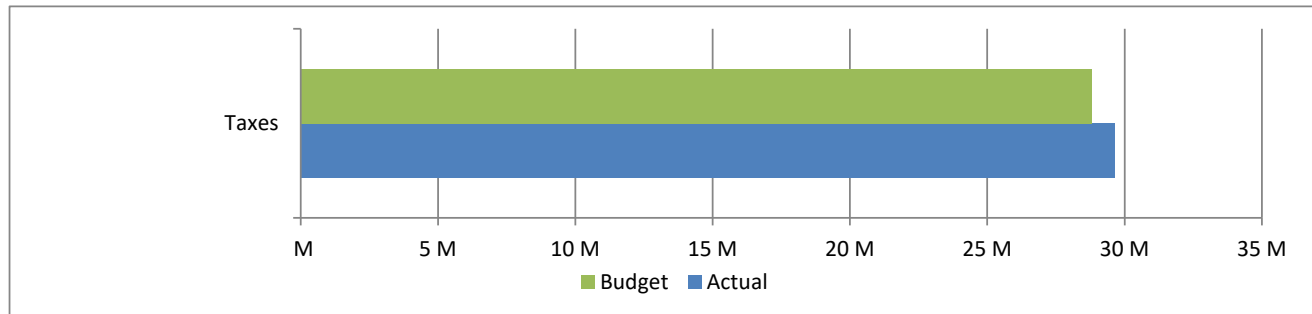
**High Plains Library District
 Net Income (Loss) Actual vs Budget
 For the Period Ended December 31, 2018
 100.0% of budget year elapsed**

Income (Loss)	Year To Date Actual	Annual Budget	Variance	% of Actual to Annual Budget
Revenue	30,541,426	29,075,599	1,465,827	105.04%
Expenditures	22,935,414	31,959,618	9,024,204	71.76%
Total	7,606,012	(2,884,019)	10,490,031	

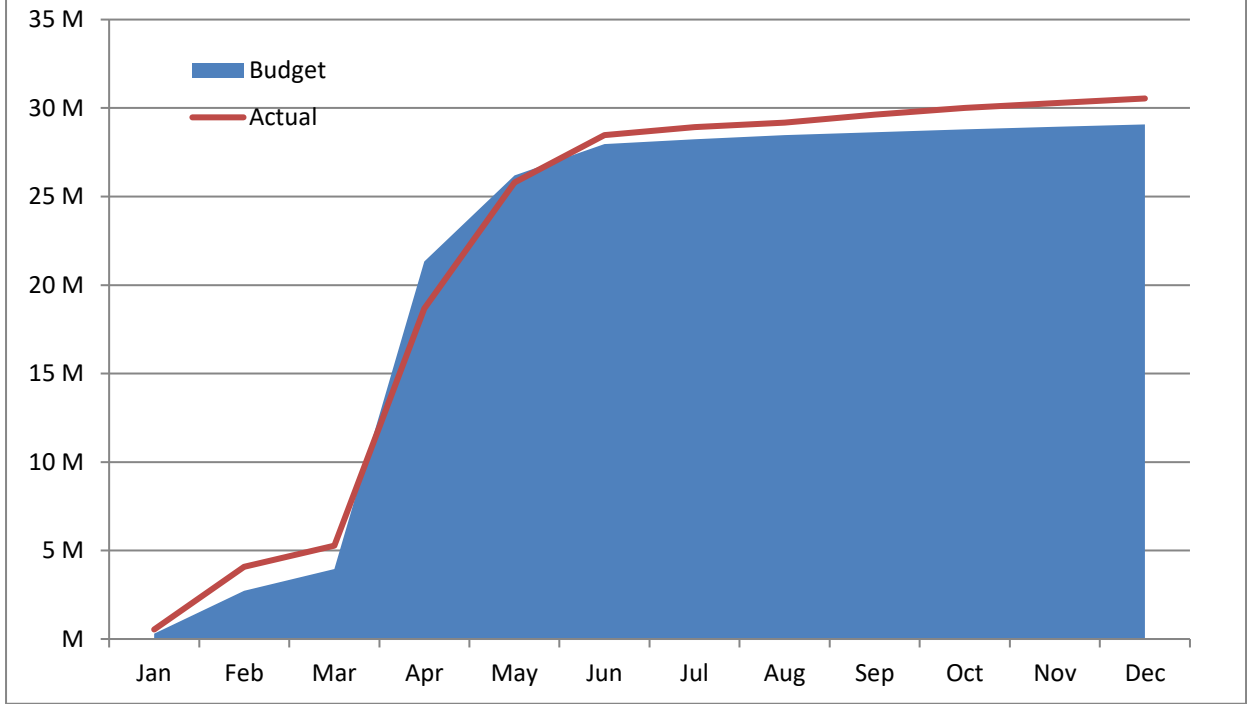


High Plains Library District
Net Income (Loss) Actual vs Budget
For the Period Ended December 31, 2018
100.0% of budget year elapsed

Revenues	Year To Date Actual	Annual Budget	Variance	% of Actual to Annual Budget
Taxes	29,643,492	28,790,297	853,195	102.96%
Earnings on investments	738,244	150,000	588,244	492.16%
Fines & fees	85,288	65,000	20,288	131.21%
Grant	62,302	62,302	-	100.00%
Other	12,100	8,000	4,100	151.25%
Total	30,541,426	29,075,599	1,465,827	



Accumulated Revenues



High Plains Library District
Net Income (Loss) Actual vs Budget
For the Period Ended December 31, 2018
100.0% of budget year elapsed

Expenditures	Year To Date Actual	Annual Budget	Variance	% of Actual to Annual Budget
S & W / Benefits	9,345,387	10,462,359	1,116,972	89.32%
Operations	4,908,064	5,731,152	823,088	85.64%
Capital outlay				
Lincoln Park	665,967	2,000,000	1,334,033	33.30%
Kersey Library	-	400,000	400,000	0.00%
Other	835,962	6,167,350	5,331,388	13.55%
Debt service	1,097,027	1,115,750	18,723	98.32%
Member tax distribution	6,083,007	6,083,007	-	100.00%
Total	22,935,414	31,959,618	9,024,204	71.76%

