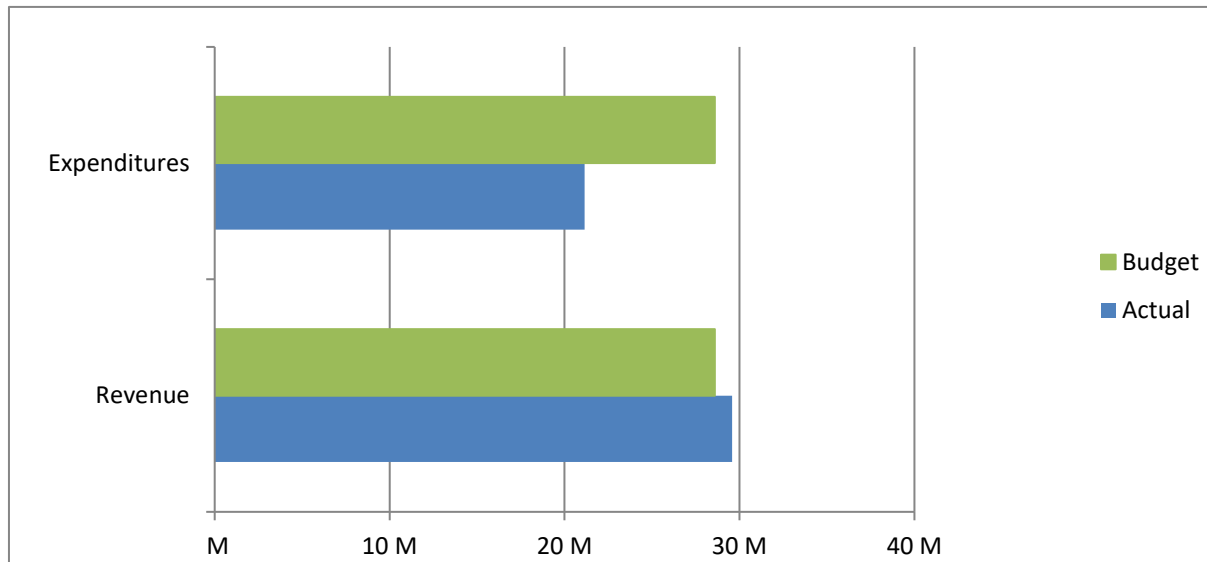


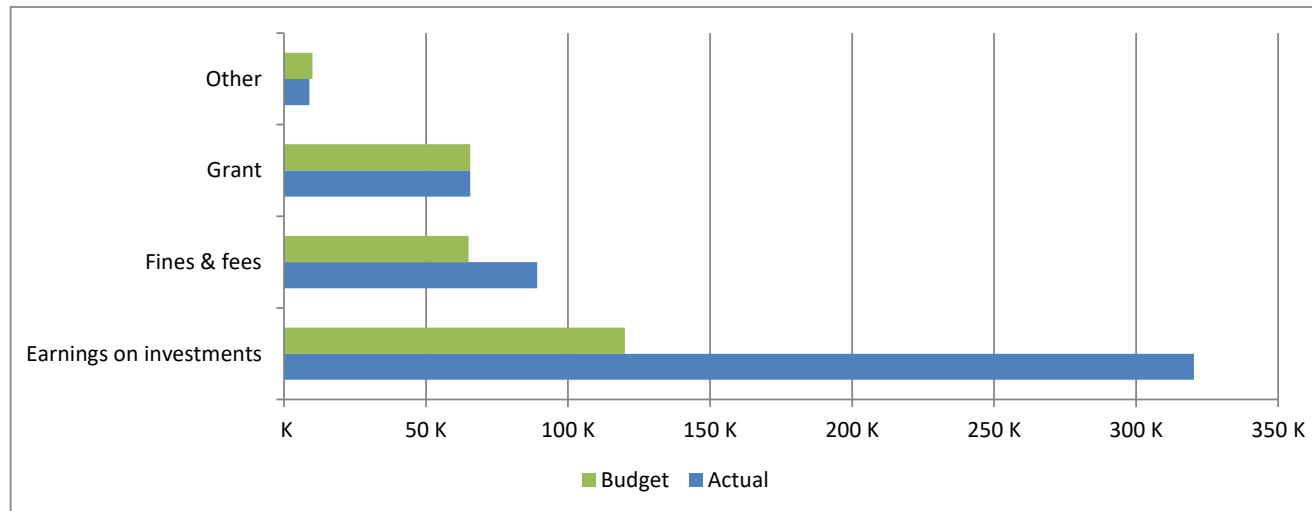
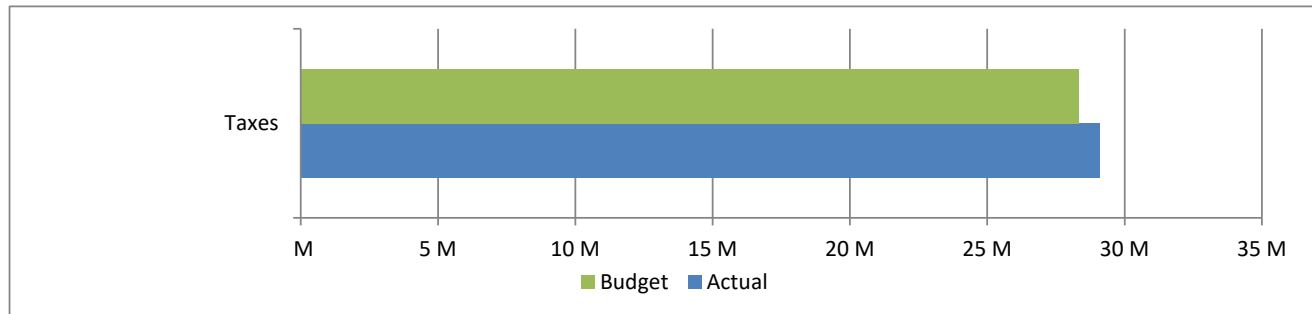
**High Plains Library District**  
**Net Income (Loss) Actual vs Budget**  
**For the Period Ended December 31, 2017**  
**100.0% of budget year elapsed**

Income (Loss)	Year To Date Actual	Annual Budget	Variance	% of Actual to Annual Budget
Revenue	29,570,974	28,591,000	979,974	103.43%
Expenditures	21,151,533	28,591,000	7,439,467	73.98%
Total	8,419,441	-	8,419,441	

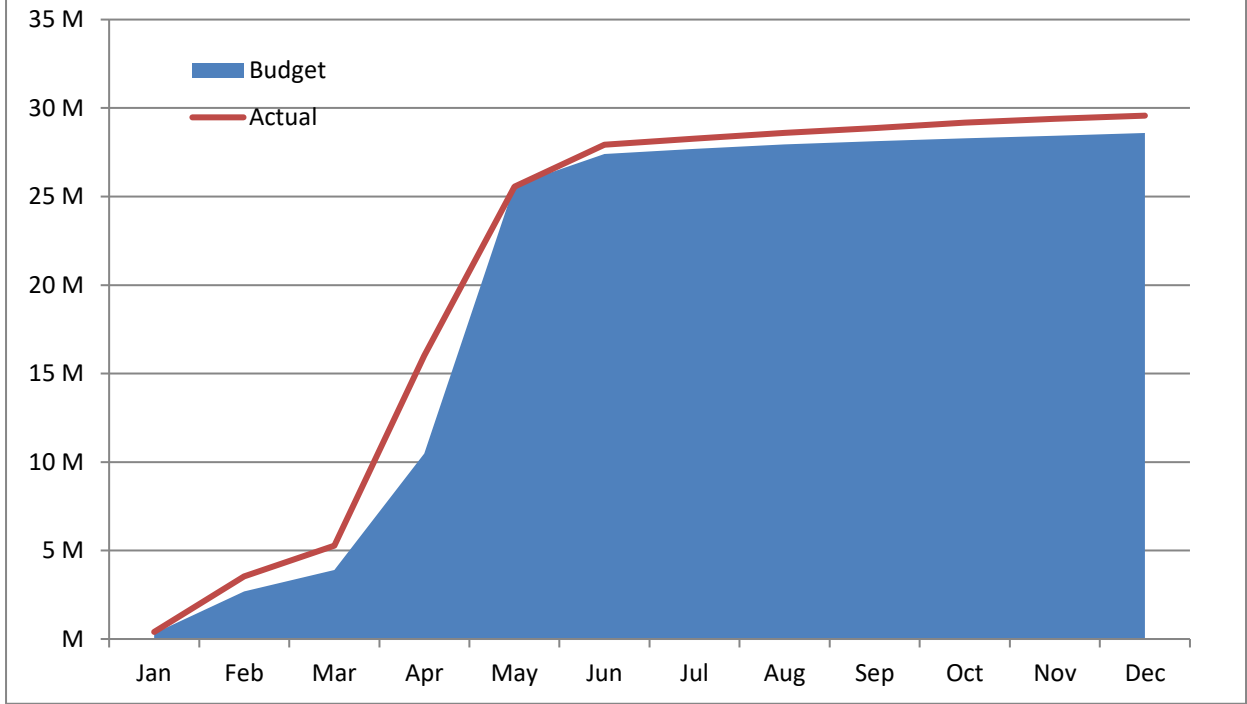


**High Plains Library District**  
**Revenues Actual vs Budget**  
**For the Period Ended December 31, 2017**  
**100.0% of budget year elapsed**

Revenues	Year To Date Actual	Annual Budget	Variance	% of Actual to Annual Budget
Taxes	29,086,904	28,330,379	756,525	102.67%
Earnings on investments	320,386	120,000	200,386	266.99%
Fines & fees	89,100	65,000	24,100	137.08%
Grant	65,621	65,621	-	100.00%
Other	8,963	10,000	(1,037)	89.63%
<b>Total</b>	<b>29,570,974</b>	<b>28,591,000</b>	<b>979,974</b>	



## Accumulated Revenues



**High Plains Library District**  
**Expenditures Actual vs Budget**  
**For the Period Ended December 31, 2017**  
**100.0% of budget year elapsed**

Expenditures	Year To Date Actual	Annual Budget	Variance	% of Actual to Annual Budget
S & W / Benefits	9,127,317	9,902,332	775,015	92.17%
Operations	4,598,802	5,361,536	762,734	85.77%
Capital outlay				
Lincoln Park	-	5,000,000	5,000,000	0.00%
Kersey Library	-	400,000	400,000	0.00%
Other	93,957	582,366	488,409	16.13%
Debt service	1,104,216	1,117,525	13,309	98.81%
Member tax distribution	6,227,241	6,227,241	-	100.00%
<b>Total</b>	<b>21,151,533</b>	<b>28,591,000</b>	<b>7,439,467</b>	<b>73.98%</b>

