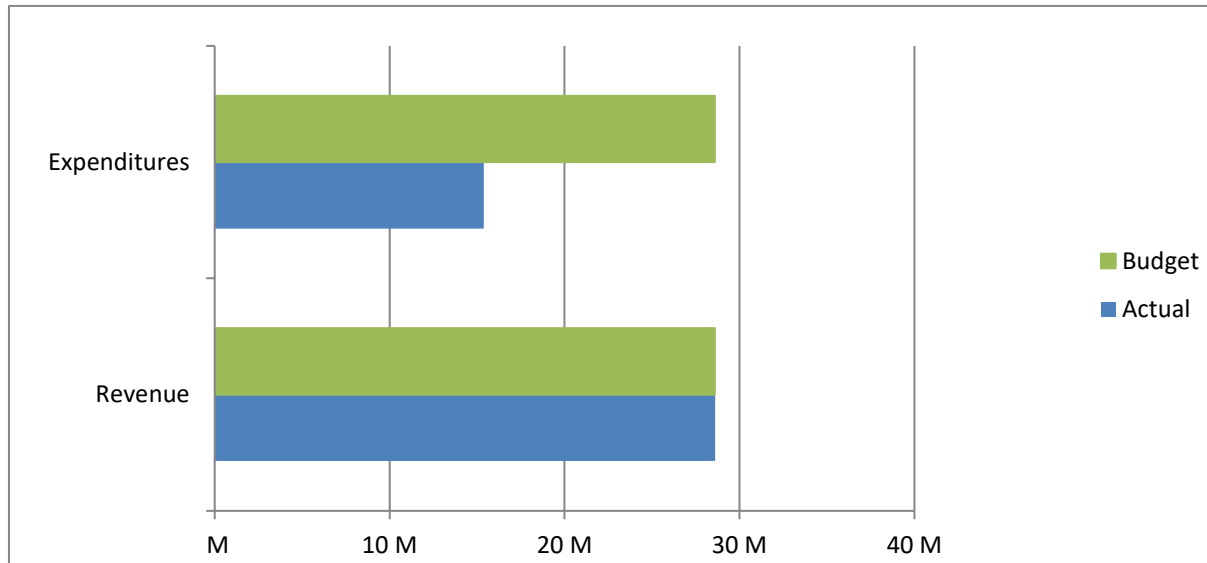


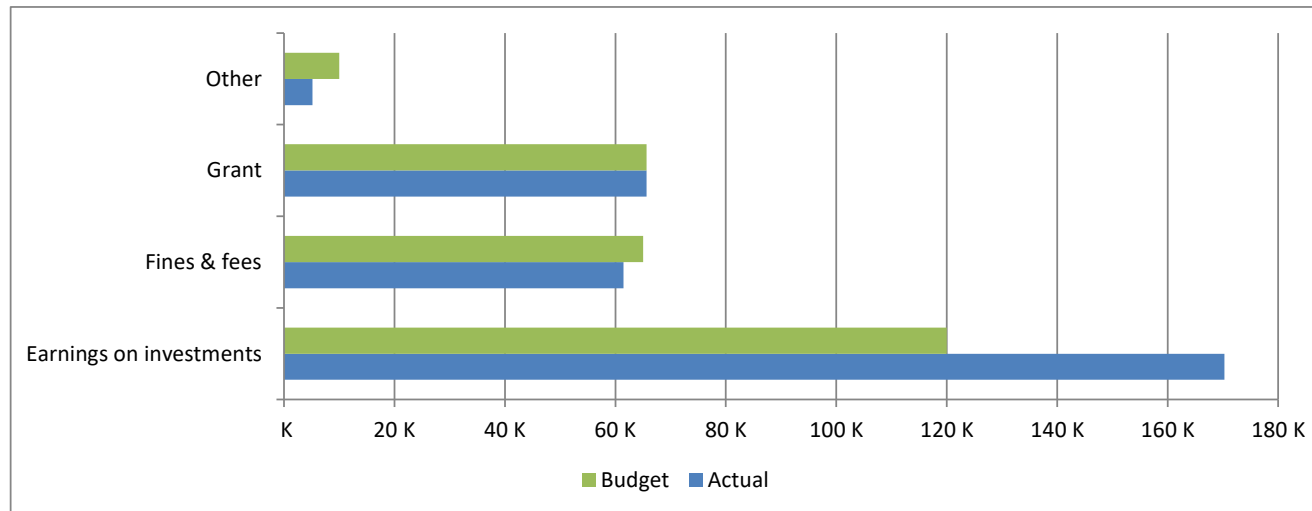
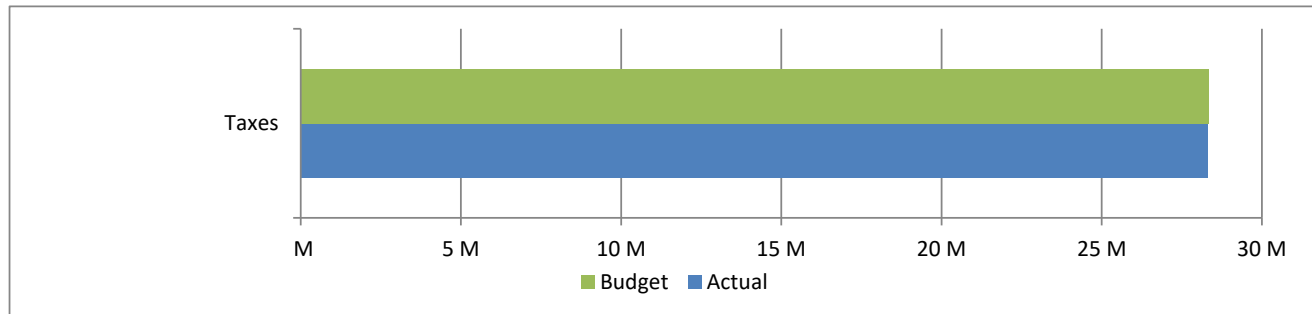
High Plains Library District
Net Income (Loss) Actual vs Budget
For the Period Ended August 31, 2017
66.7% of budget year elapsed

Income (Loss)	Year To Date Actual	Annual Budget	Variance	% of Actual to Annual Budget
Revenue	28,600,083	28,591,000	9,083	100.03%
Expenditures	15,384,735	28,591,000	13,206,265	53.81%
Total	13,215,348	-	13,215,348	

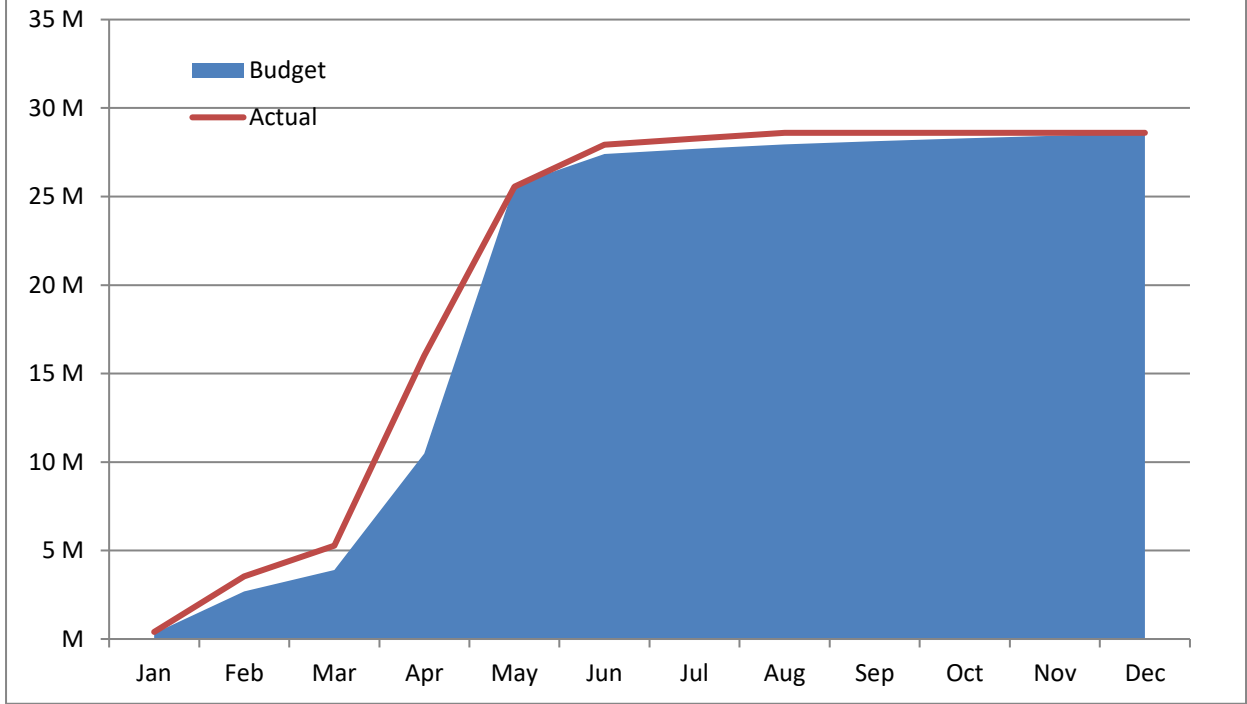


High Plains Library District
Revenues Actual vs Budget
For the Period Ended August 31, 2017
66.7% of budget year elapsed

Revenues	Year To Date Actual	Annual Budget	Variance	% of Actual to Annual Budget
Taxes	28,297,528	28,330,379	(32,851)	99.88%
Earnings on investments	170,271	120,000	50,271	141.89%
Fines & fees	61,493	65,000	(3,507)	94.60%
Grant	65,621	65,621	-	100.00%
Other	5,170	10,000	(4,830)	51.70%
Total	28,600,083	28,591,000	9,083	



Accumulated Revenues



High Plains Library District
Expenditures Actual vs Budget
For the Period Ended August 31, 2017
66.7% of budget year elapsed

Expenditures	Year To Date Actual	Annual Budget	Variance	% of Actual to Annual Budget
S & W / Benefits	5,978,052	9,902,332	3,924,280	60.37%
Operations	3,101,572	5,361,536	2,259,964	57.85%
Capital outlay				
Lincoln Park	-	5,000,000	5,000,000	0.00%
Kersey Library	-	400,000	400,000	0.00%
Other	32,627	582,366	549,739	5.60%
Debt service	45,243	1,117,525	1,072,282	4.05%
Member tax distribution	6,227,241	6,227,241	-	100.00%
Total	15,384,735	28,591,000	13,206,265	53.81%

