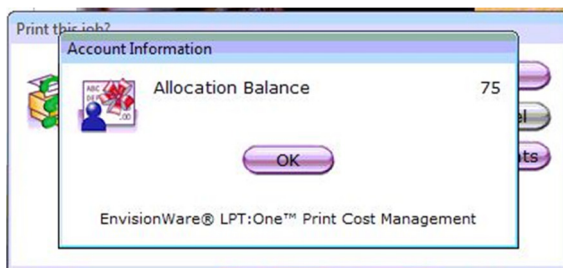
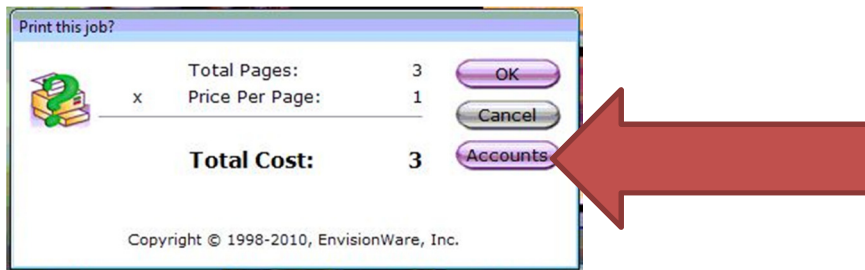


TO CHECK YOUR ACCOUNT BALANCE: The box below will be displayed after you select print when working with a file. Select the **ACCOUNTS** button. Your remaining balance will then be displayed. *Be aware your balance will **not** change, specifically credits will not be deducted from your balance, until after you release the print job at the release station near the printer.*



The image below shows what you will see at the print release station. Here you will be prompted for the formal release of the print job at which time, credits will be deducted from your balance.

