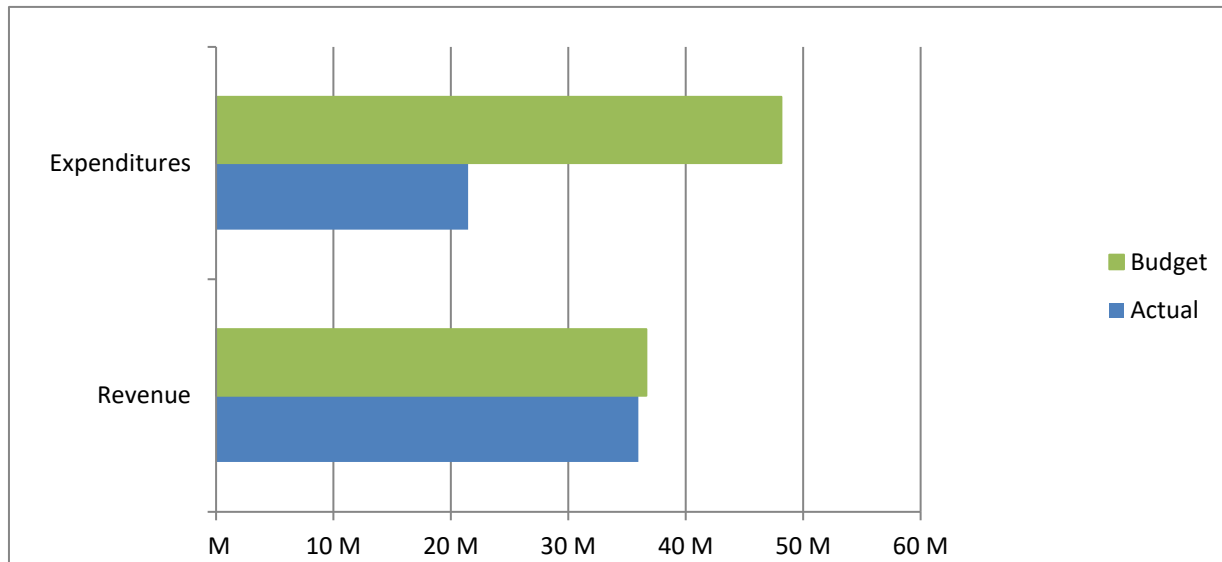


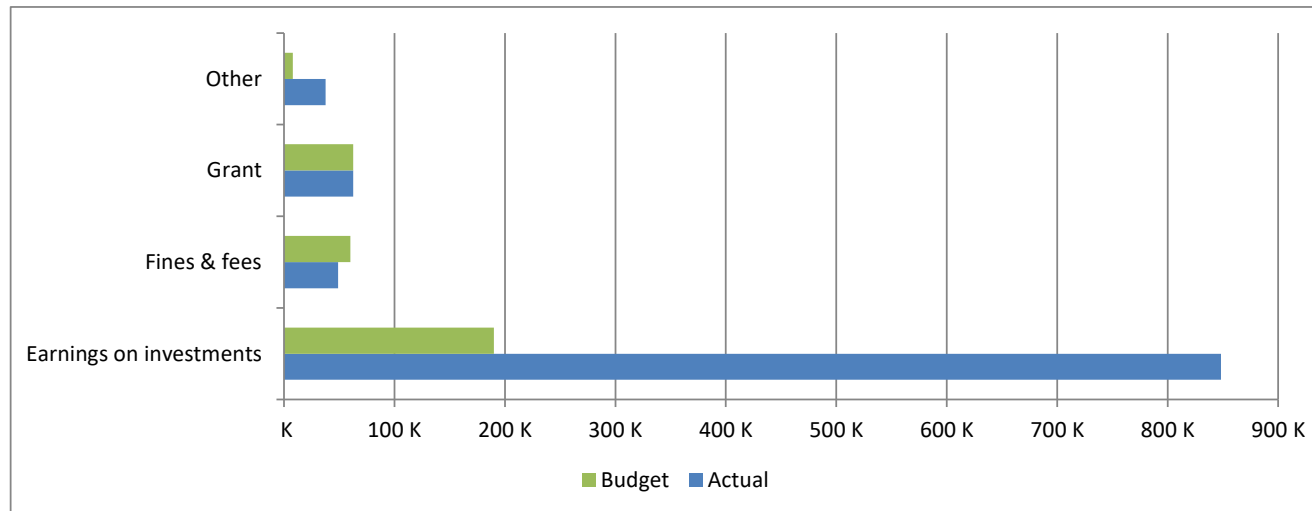
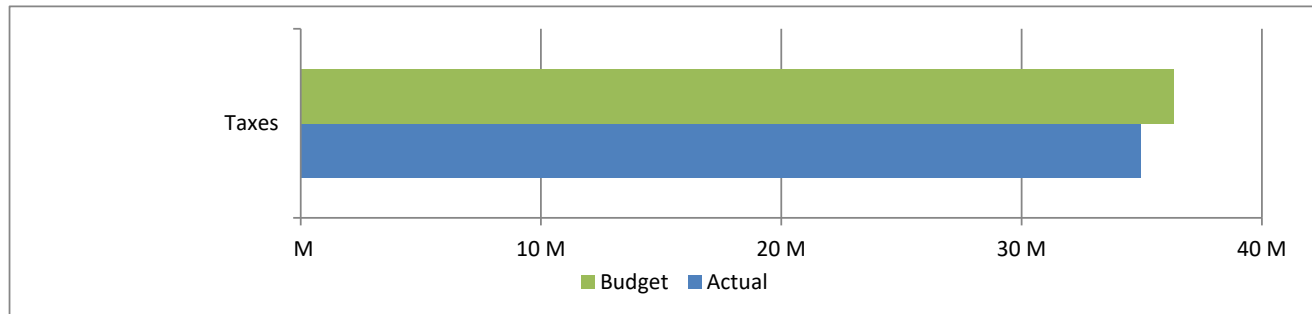
**High Plains Library District  
 Net Income (Loss) Actual vs Budget  
 For the Period Ended September 30, 2019  
 75.0% of budget year elapsed**

Income (Loss)	Year To Date Actual	Annual Budget	Variance	% of Actual to Annual Budget
Revenue	35,969,137	36,650,181	(681,044)	98.14%
Expenditures	21,465,085	48,128,918	26,663,833	44.60%
Total	14,504,052	(11,478,737)	25,982,789	

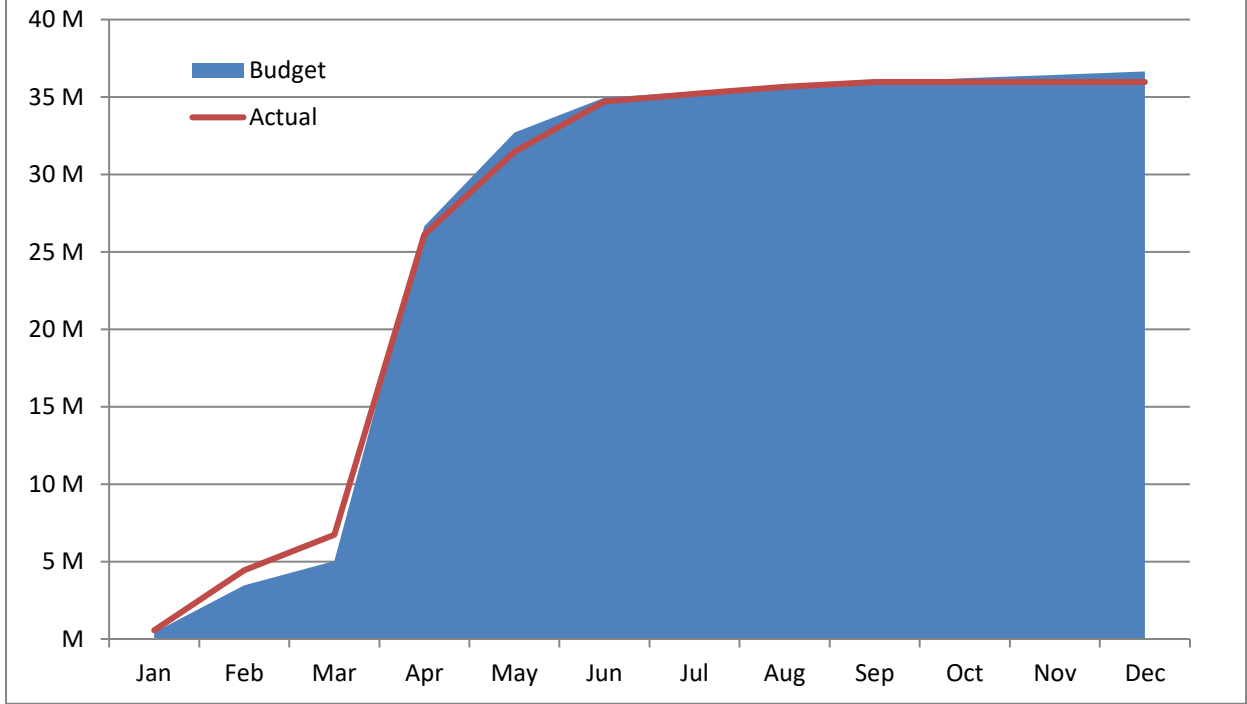


**High Plains Library District**  
**Net Income (Loss) Actual vs Budget**  
**For the Period Ended September 30, 2019**  
**75.0% of budget year elapsed**

Revenues	Year To Date Actual	Annual Budget	Variance	% of Actual to Annual Budget
Taxes	34,971,745	36,329,590	(1,357,845)	96.26%
Earnings on investments	848,261	190,000	658,261	446.45%
Fines & fees	49,014	60,000	(10,986)	81.69%
Grant	62,591	62,591	-	100.00%
Other	37,526	8,000	29,526	469.08%
<b>Total</b>	<b>35,969,137</b>	<b>36,650,181</b>	<b>(681,044)</b>	



## Accumulated Revenues



**High Plains Library District**  
**Net Income (Loss) Actual vs Budget**  
**For the Period Ended September 30, 2019**  
**75.0% of budget year elapsed**

Expenditures	Year To Date Actual	Annual Budget	Variance	% of Actual to Annual Budget
S & W / Benefits	7,487,070	11,829,189	4,342,119	63.29%
Operations	4,141,691	6,224,004	2,082,313	66.54%
Capital outlay	2,142,008	22,269,100	20,127,092	9.62%
Debt service	16,644	165,000	148,356	10.09%
Member tax distribution	7,677,672	7,641,625	(36,047)	100.47%
<b>Total</b>	<b>21,465,085</b>	<b>48,128,918</b>	<b>26,663,833</b>	<b>44.60%</b>

